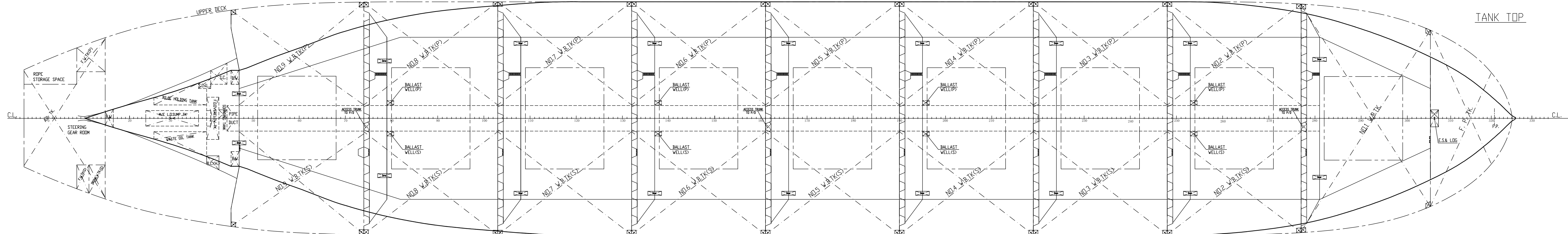
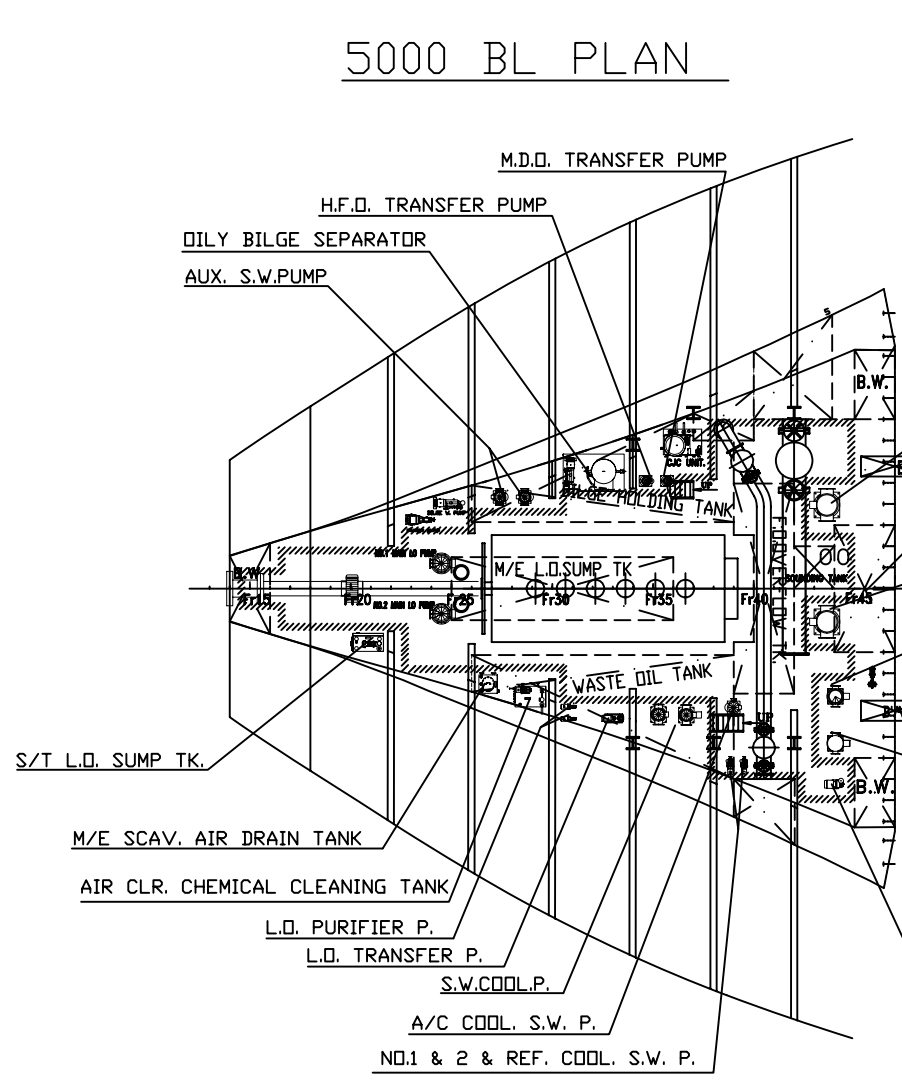
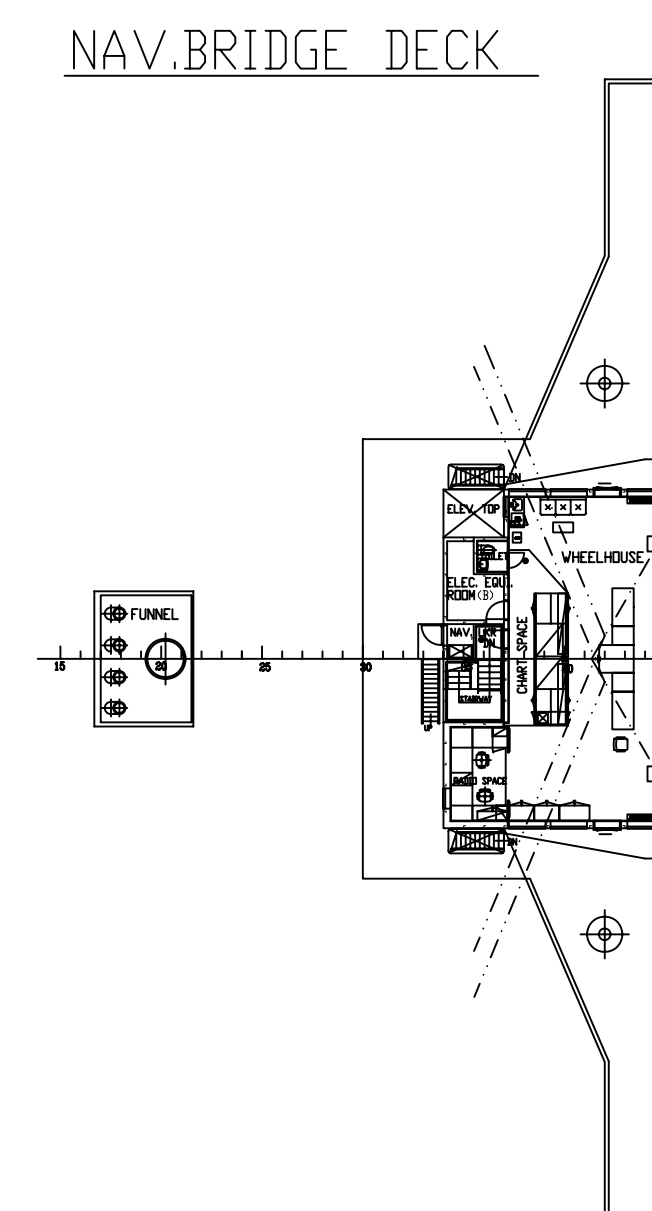
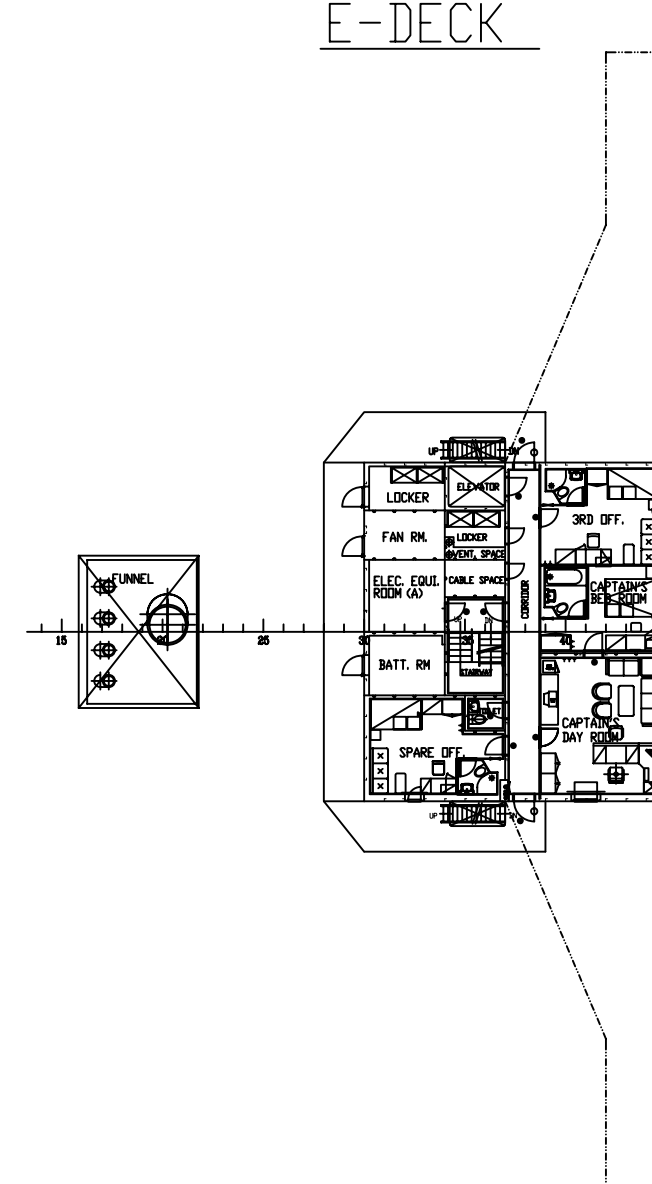
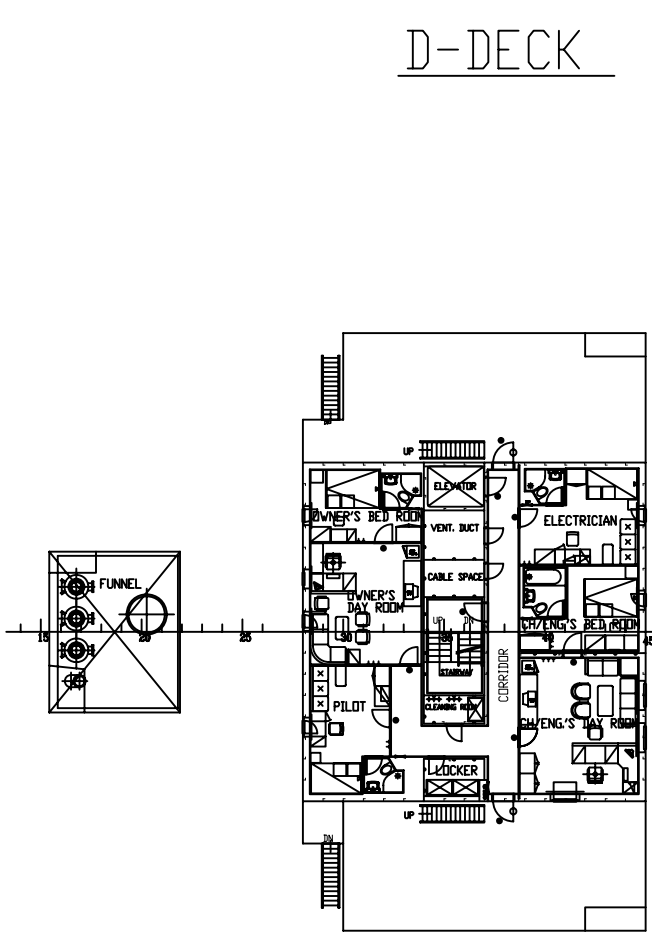
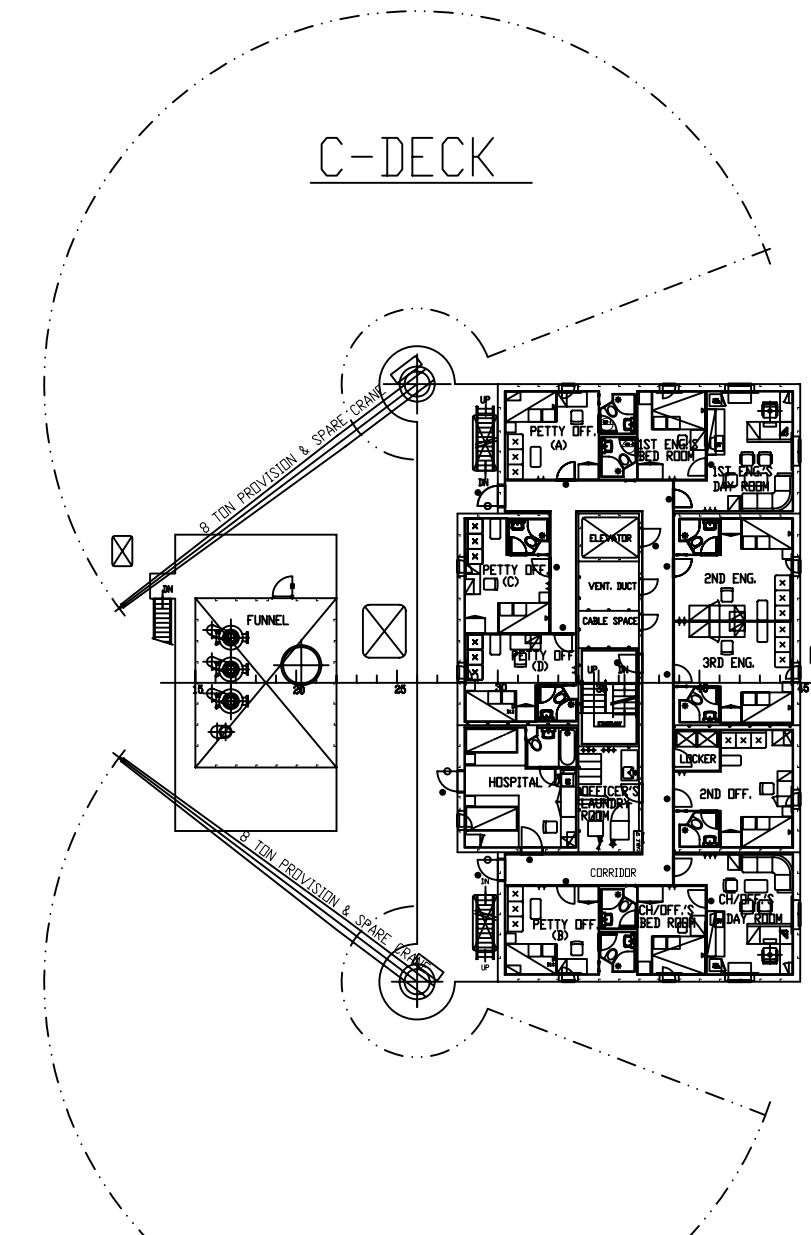
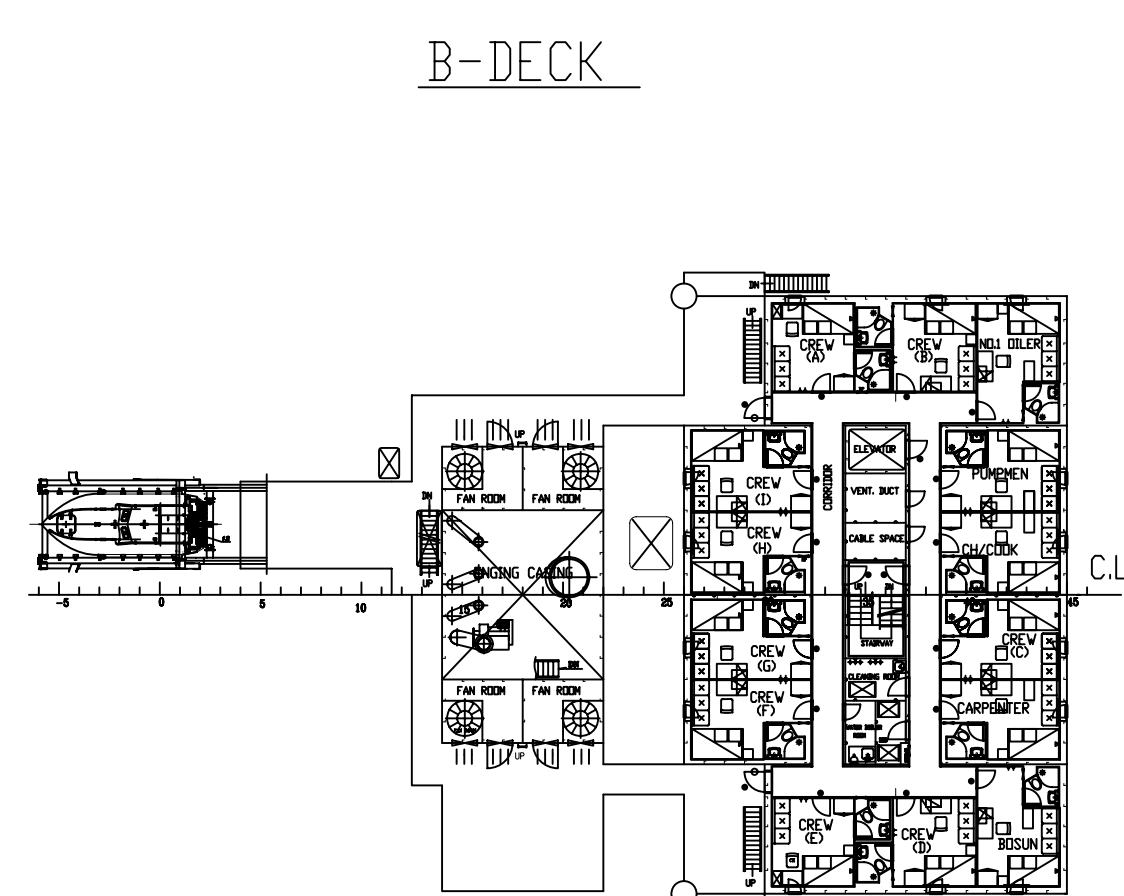
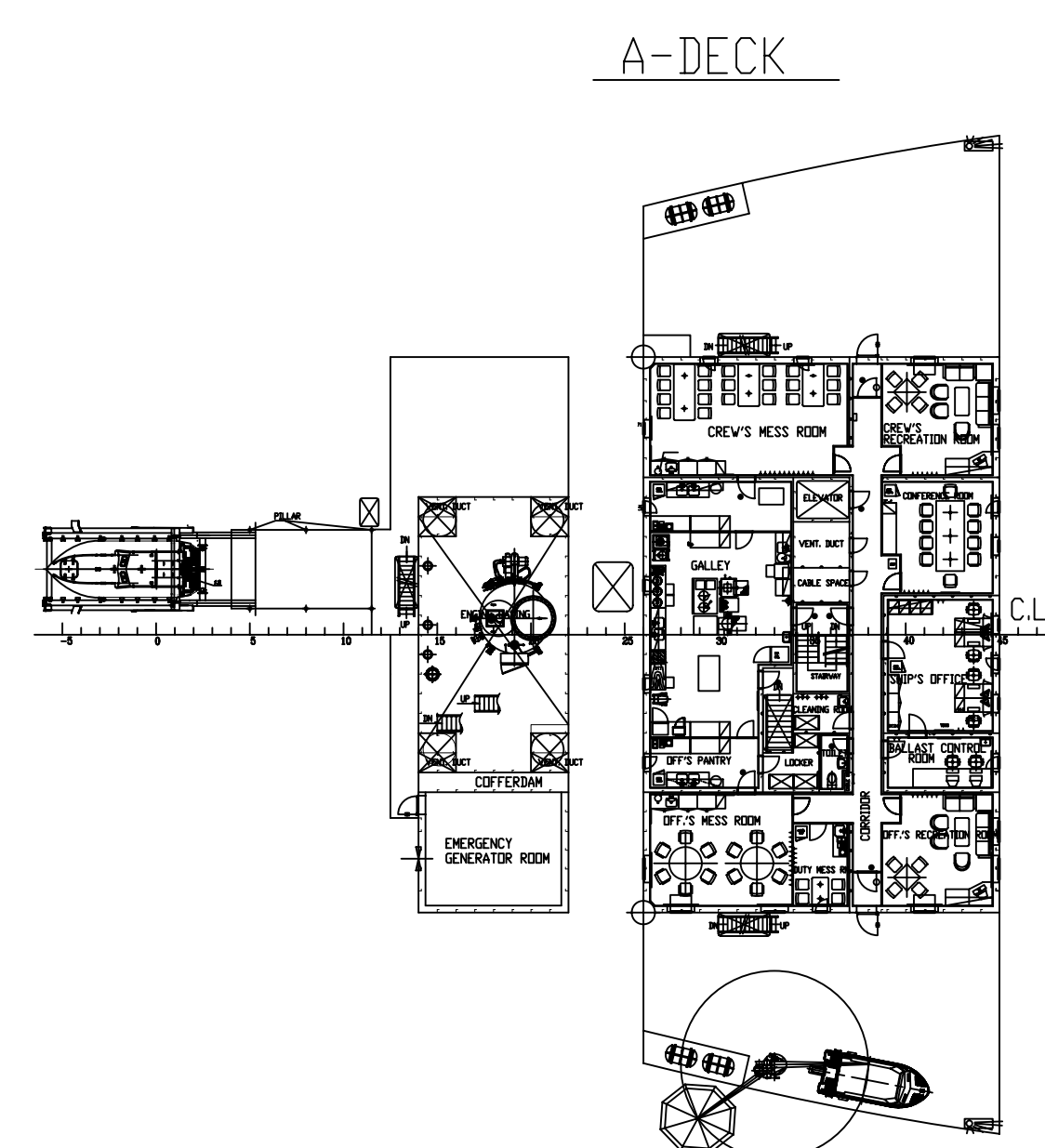
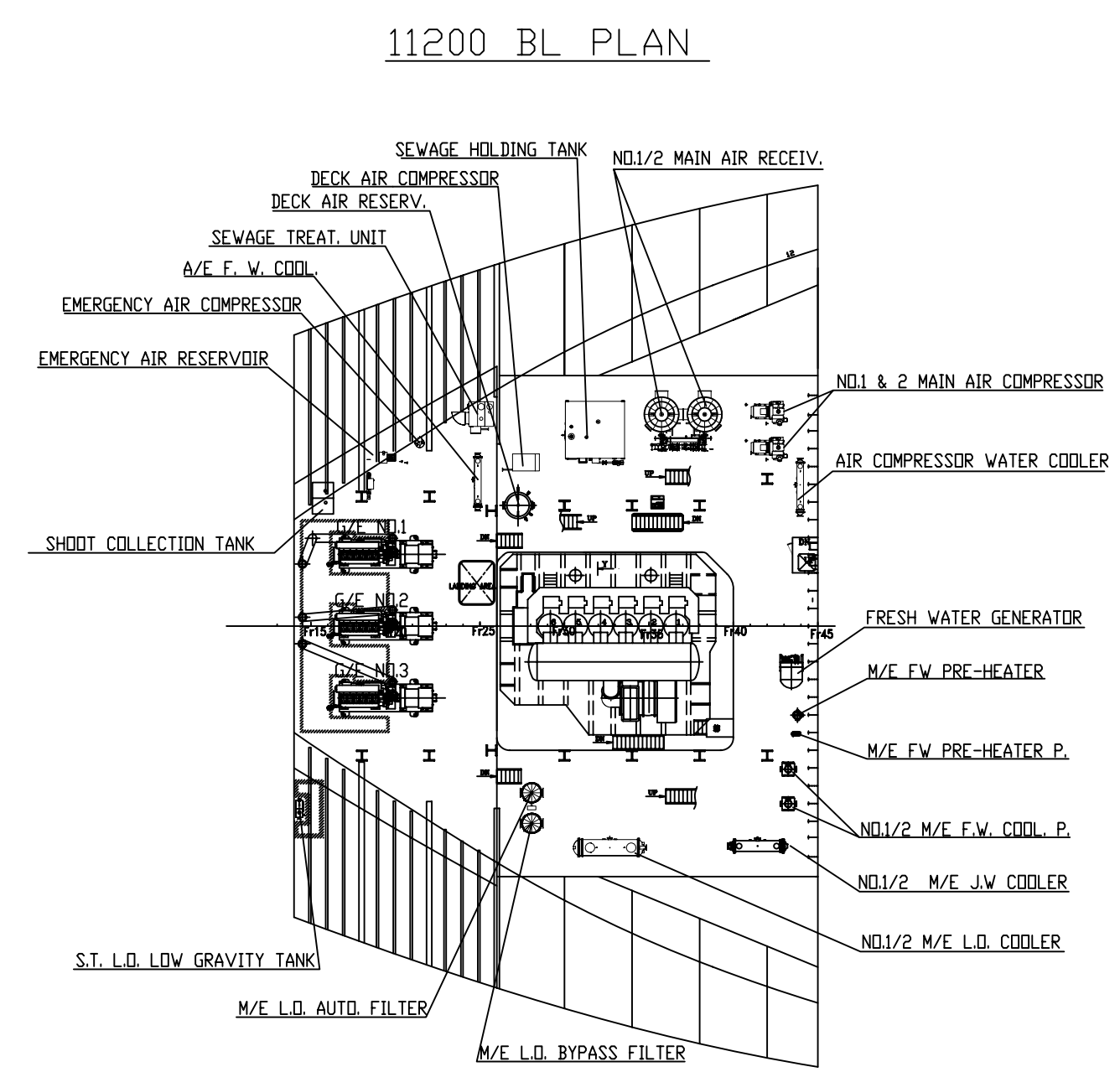
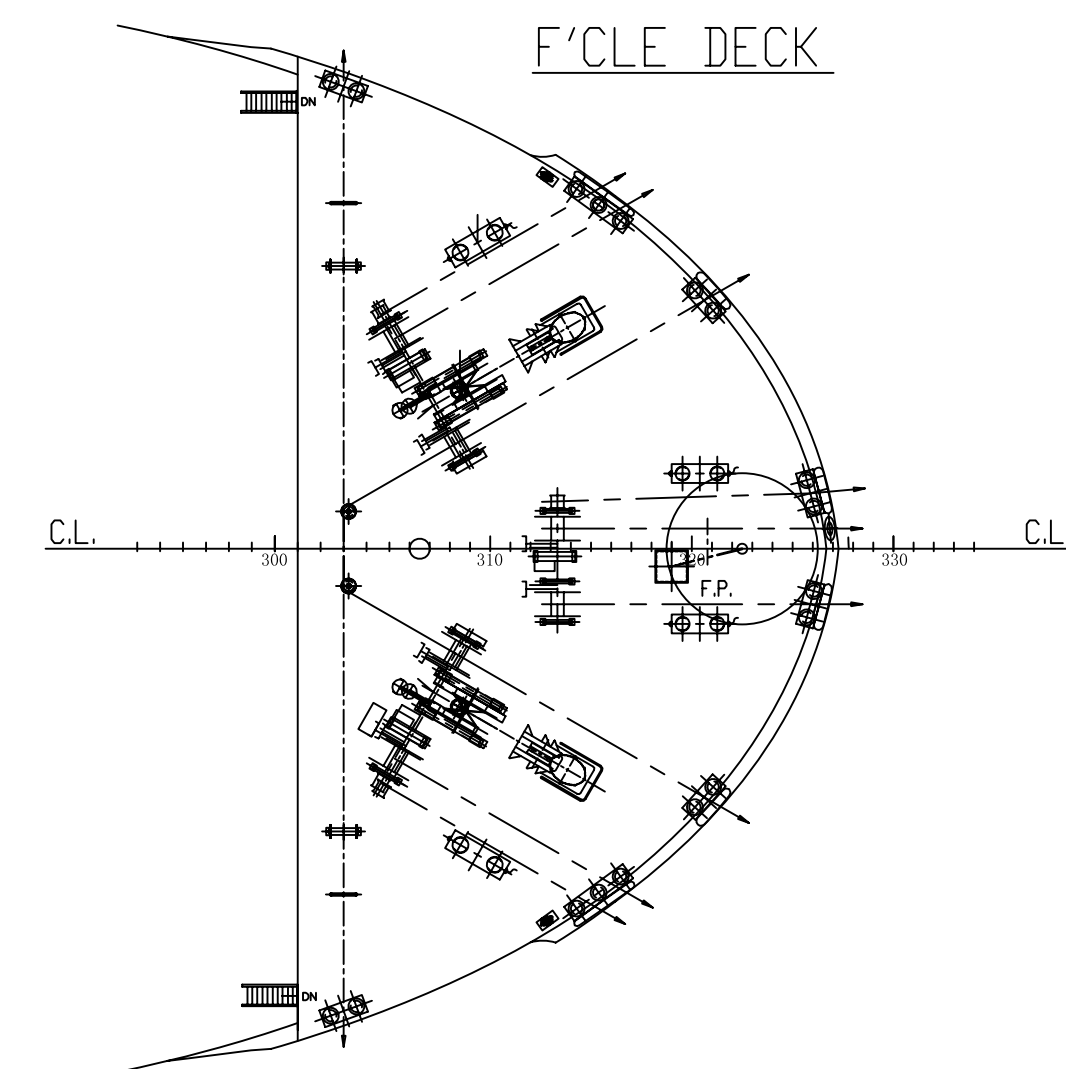
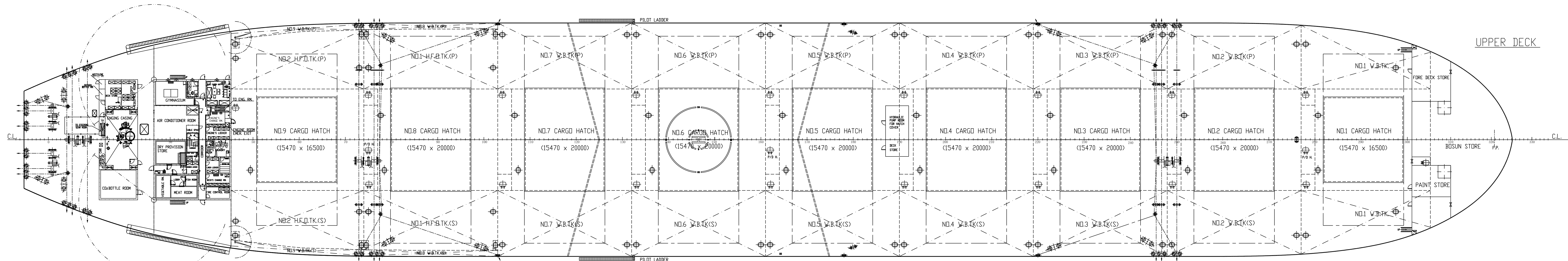
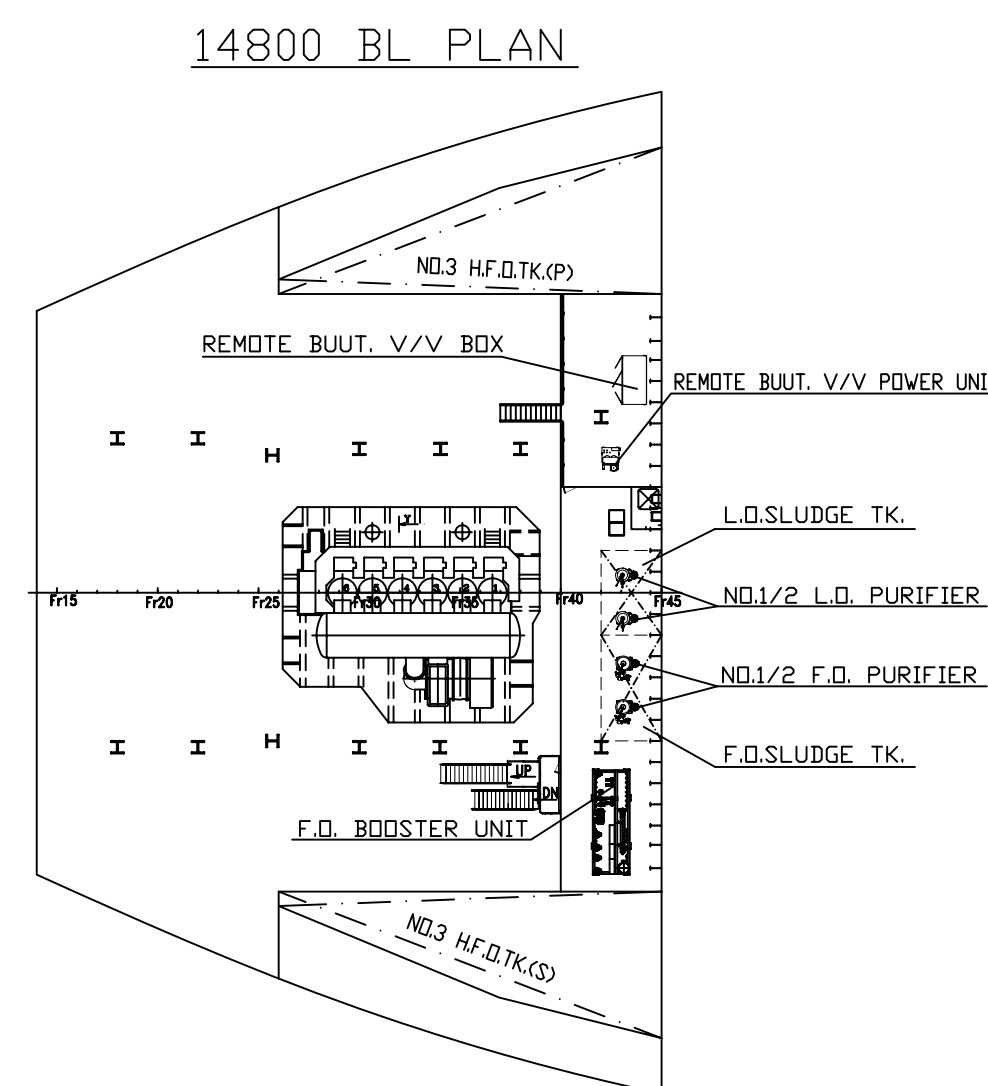
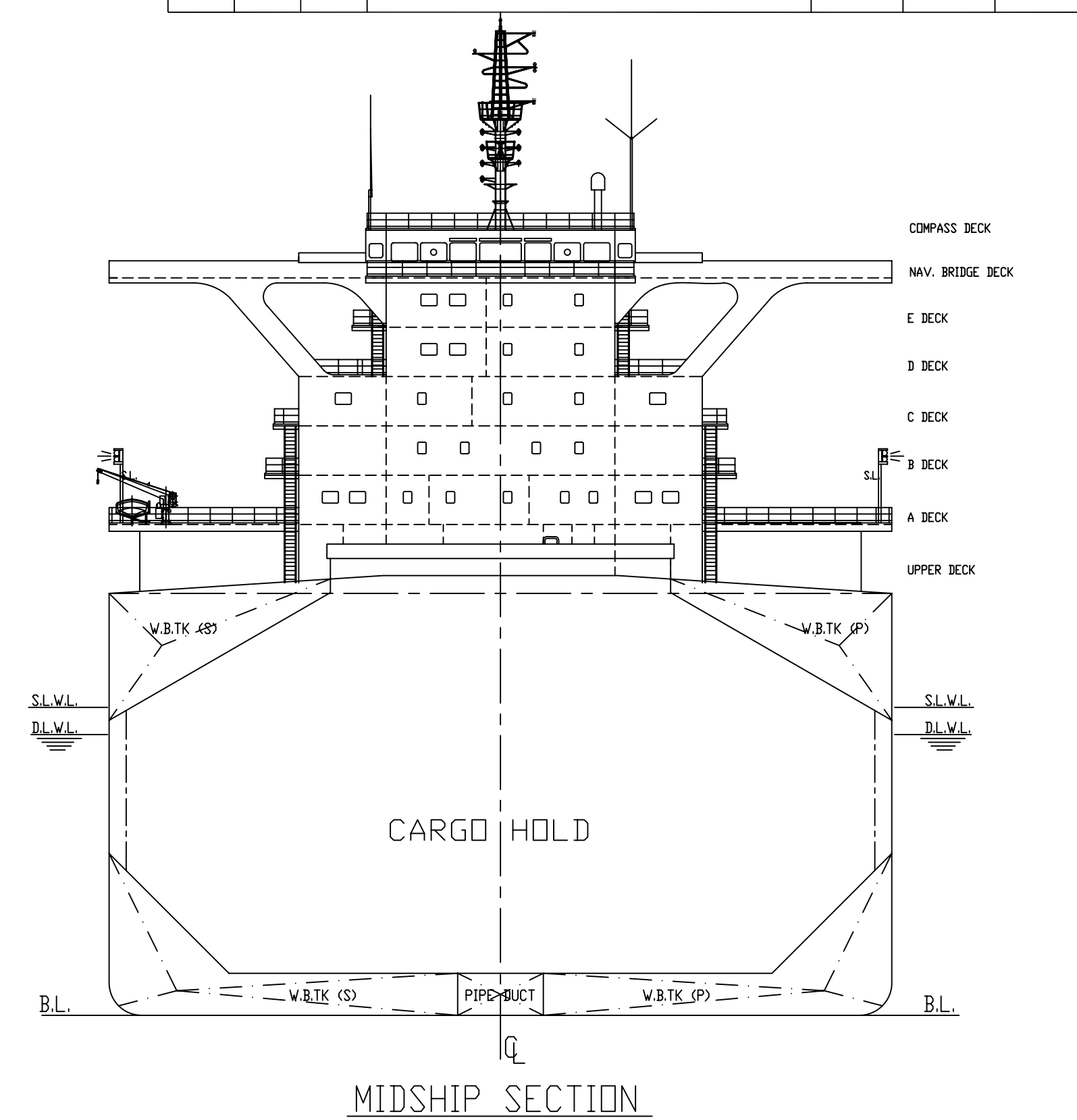
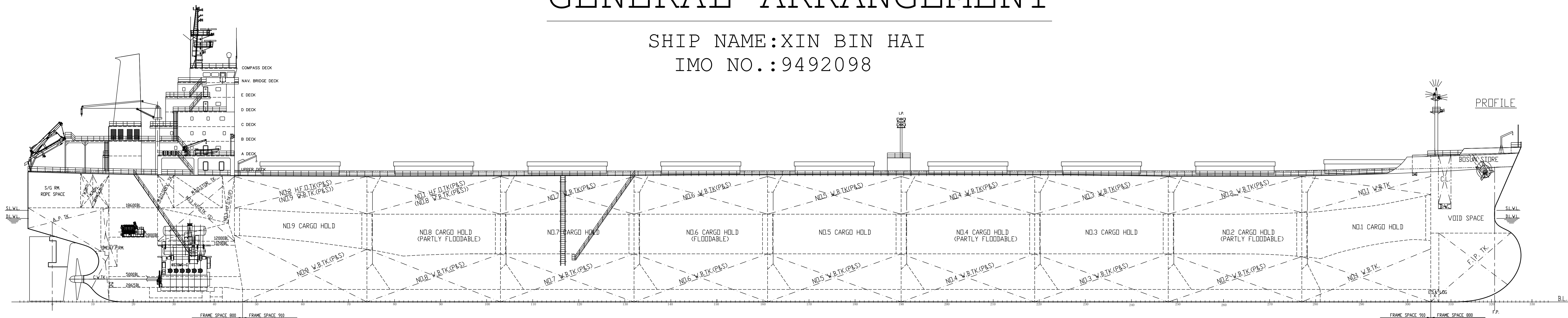
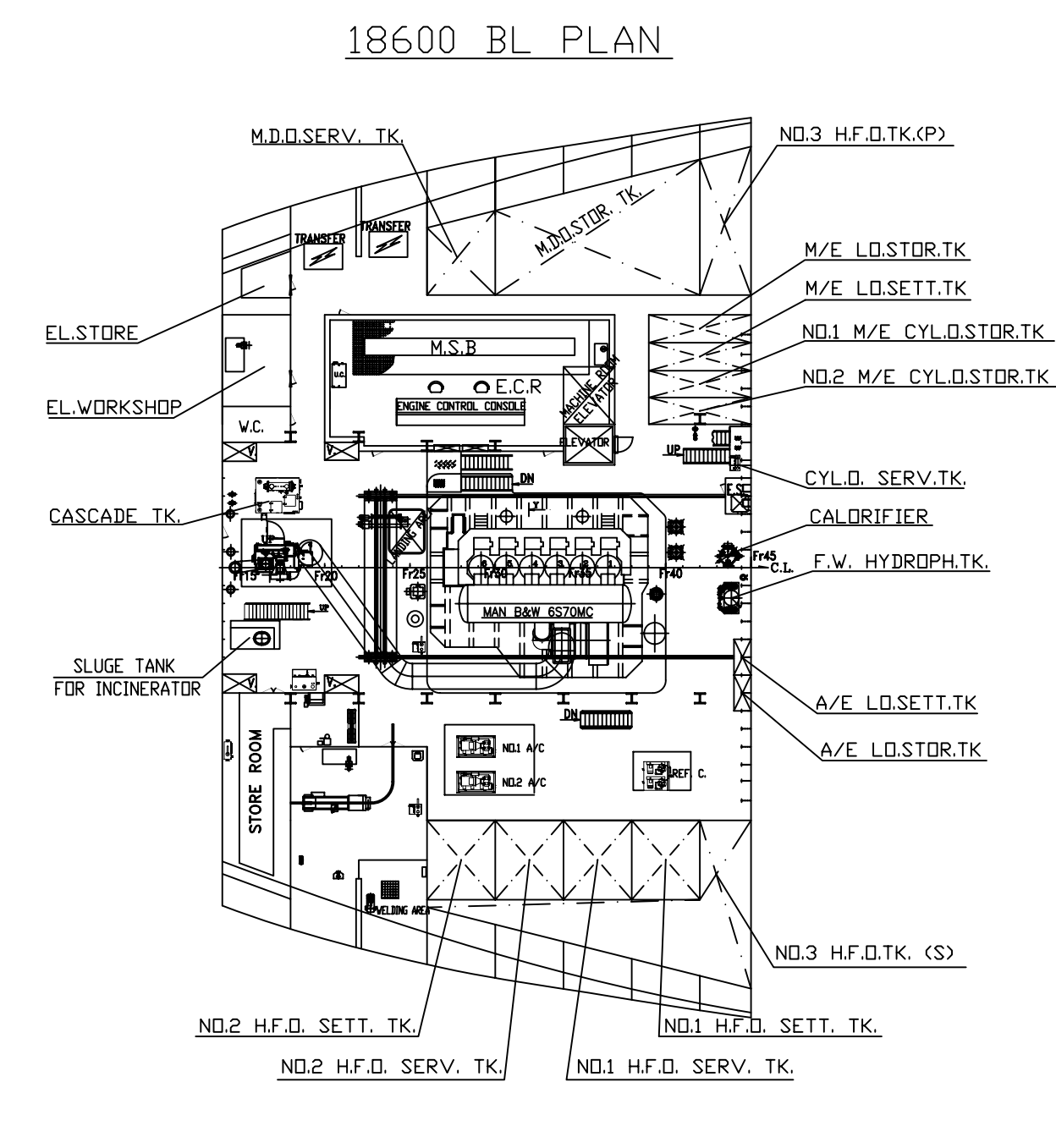


GENERAL ARRANGEMENT

SHIP NAME:XIN BIN HAI
IMO NO.:9492098



PRINCIPAL PARTICULARS


LENGTH OVERALL	abt. 295.0	m
LENGTH B.P.	285.00	m
BREADTH(MLD.)	46.00	m
DEPTH(MLD.)	24.80	m
DESIGN DRAFT(MLD.)	16.50	m
SCANTLING DRAFT(MLD.)	18.10	m
SERVICE SPEED (CSR WITH 15% S.M.)	15.00	kn

MAIN ENGINE

TYPE: MAN B&W 6S70MC-C MK7
NUMBER: ONE (1) SET
OUTPUT: SMCR 18,660kW AT 91.0 r/min
CSR 15,861kW AT 86.2 r/min

CLASSIFICATION

LR + 100A1 Bulk Carrier, CSR, BC-A, Hold Nos. 2, 4, 6 & 8 may be empty, GRAB[25], ESP, LI, *1WS, ShipRight(CM),
+ LMC, UMS, with the descriptive notes ShipRight "BWMP(S), SCM"

 DALIAN CHINA TEL: 0411-84682166 FAX: 0411-84412923 E-MAIL: KFS@DSCOR.COM		180,000 DWT 载货船 180,000 DWT BULK CARRIER		完工设计 FINAL DESIGN DS42-050-27001	
文件号	版本	0		重量	1,300
设计	设计	总布置图		尺寸	1:300
校对	校核	GENERAL ARRANGEMENT		共 1 页	第 1 页
审核	审核			TOTAL SHEETS	SHEET
校核	校核			大连船舶重工集团有限公司 船舶设计部 完工设计研析所 DSC 设计 050000 ENGINEERING AND DEVELOPMENT RESEARCH CENTER	
批准	批准	BC1800-27			